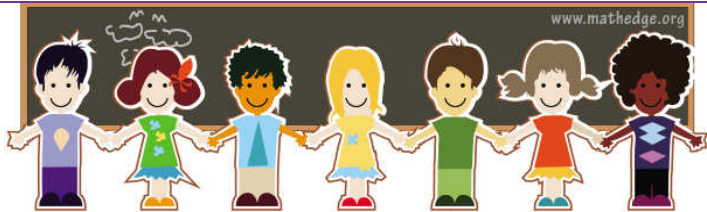


MathEdge Enriched Afterschool Programs

Designed for the **Advanced Students**



(408) 725-2680, www.mathedge.org, mathedge@gmail.com

Registration Policies and General Information

MathEdge provides parents with a safe, rich environment where its students will have the opportunity to thrive in their educational endeavors during afterschool hours any day when school is in session. We provide flexible timing and program choices, allowing parents to save money by paying for only the amount of services used based on their working schedule and students' extracurricular activities.

Enriched Afterschool Programs is designed for the advanced students who strive to learn and develop. Through year-long participation in this program, children will be able to develop life skills such as critical thinking and time management. This program provides parents with flexible options ranging from choosing to send their child one to five days per week.

Available Subjects: School Math Courses (Common Core [6/7/8], PreAlgebra, Algebra, Geo, Algebra2, PreCalculus), English Success (Comprehension, Writing+, Literature, Journalism, Speech+), STEM Training (Java+, Computer Science AP, Science+ [Biology, Chemistry, Physics], Robotics), & Elementary School Success (MathCore, EnglishCore, SpeedMath, Reading)

Registration Fee – The registration fee is required for all students new to MathEdge. It is a one-time fee if there is no break in continuing the program or if the break is less than 3 months total in a year.

Deposit – Deposit is required for program signup of more than two days per week.

Tuition – The monthly payment is due on the 25th of the preceding month. If the payment is not received by the 5th of the new month, a 5% late fee will be charged. If the payment is not received by the 10th of the new month, a 10% late fee will be charged. If not starting at the beginning of a month, a partial month fee will be assessed. Monthly fee would be prorated accordingly if that month has more or less than 4 weeks (**A month = 4 weeks / 4 classes**).

Sibling/2nd Subject Discount – **5%** (<4days/wk) or **10%** (4+ days/wk) off the lesser-priced program / sibling's fee after the full fees have been paid for one child.

Homework Club (2:30-4pm) – Included **FREE**.

Class Makeup – Allowed within the same week or deferred within the month with 48 hours advance notice and subject to space availability.

Class Materials Fee – Some are included in program but some may not. Refer to individual program for details.

Referrals – We offer an unlimited referral bonus of \$25 per family referred to join 4+ days Enriched Afterschool program by our current students. To qualify for the referral bonus, the referred family must not already be on our contact list and must note the referring student on the registration form. Bonus is honored after the new student(s) has attended the program for 3 months.

Cancellation or Transfer Policy – There are no refunds for missed classes or withdrawal. Full-month transfer to another MathEdge program is allowed after the initial 3-month signup requirement. If transferring to another MathEdge program, a new initial 3-month signup requirement applies.

Illness – Children who are sick should be kept at home and will not be permitted to stay in class.

Late Pickup / Early Dropoff – Fee will be assessed (if dropping off more than 10 minutes before class or picking up more than 10 minutes after class) at \$1/min after 1 warning. Payment must be made immediately.

Extended Childcare - is available at \$12/hr if paid at least 2 days in advance.

Student Performance – Quarterly report cards will be sent home with the students.

Students Leaving Without Their Parents - We do not allow students to walk home, leave the center, or leave with anybody else without written notice from the student's parents / guardians beforehand.

Returned check charge – \$25

No School Pickup Service – However, will provide driver resources. MathEdge is not a licensed daycare and does not provide supervision for children. Students may not have gaps in their schedule.

www.mathedge.org

6/30/2017

Cupertino Location: 7250 Bark Lane, San Jose CA 95129

Phone: (408) 725-2680, Email: mathedge@gmail.com